

User Manual of the Intelligent Remote Control Baitboat

Please read this manual thoroughly and follow the instructions of the manual. It's hoped that this product will bring you extraordinary harvest and fun.

Some functions will be modified with the upgrading of the versions, but the user manual will still work. Please accept our apologies for any possible inconvenience.

1.Functions and Specifications of Bait boat

Boat Type	RYH-001D	RYH-003D	RYH-004D
Hull Size	63.5*43.5*24 cm	75*47*28 cm	75*47*28 cm
Hull Type	Catamaran	Trimaran	Catamaran
Bait Hopper Quantity	2	2	2
Hook Quantity	2	2	1
Hopper Load Capacity	2KG	4KG	1KG
Boat antenna（Unfoldable）	◎	◎	◎
RC antenna（Internal）	◎	◎	◎
RC Range	500M	500M	500M
Turning Radius	0.5M	0.5M	0.5M
Frequency	2.4GHZ	2.4GHZ	2.4GHZ
Driving Speed	60M/minute	60M/minute	60M/minute
Self-check of malfunction	◎	◎	◎
Air upgrade	◎	◎	◎
RC Releasing bait / hook	◎	◎	◎
Manual / Automatic Sailing	◎	◎	◎
Boat Front and Back Lamps	◎	◎	◎
Boat Power Switch on/off	Lights flashing	Lights flashing	Lights flashing

Bait hopper/Hook Releasing	Lights flashing / Warning tone	Lights flashing / Warning tone	Lights flashing / Warning tone
GPS Navigation	⊙	⊙	⊙
Fish finder	⊙	⊙	⊙
Boat Battery			
Lead-acid Battery(12V/5AH)	1-1.5 Hours	1-1.5 Hours	1-1.5 Hours
Lithium Battery(11.1V/5.2AH)	2 Hours	2 Hours	2 Hours
Lithium Battery(11.1V/10.4AH)	3 Hours	3 Hours	3 Hours

2.Functions and Specifications of the Remote Control

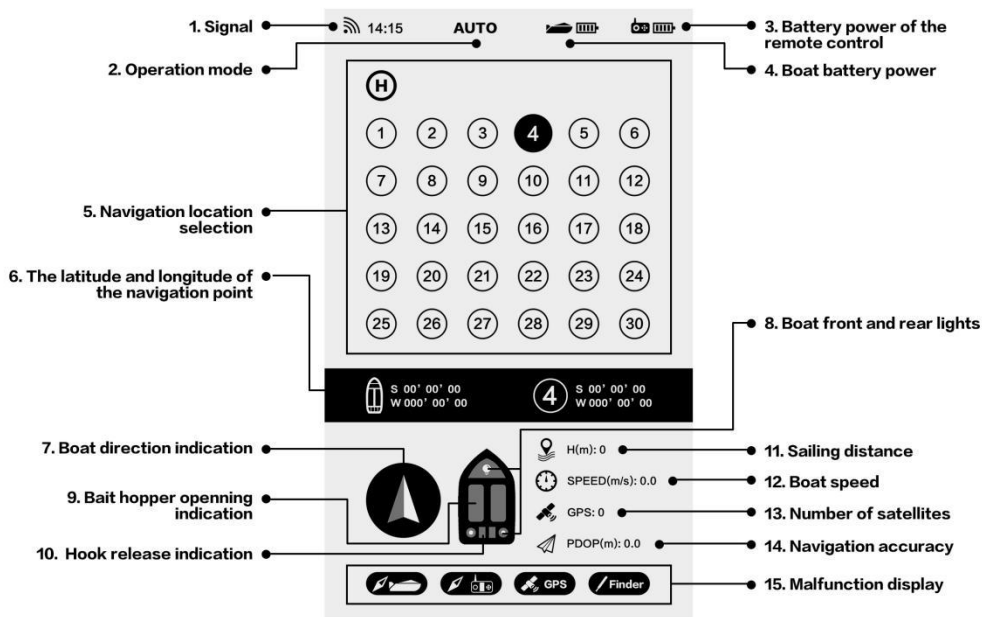


A) Name and Functions of the Buttons on the Remote Control

No.	Name of Buttons	Functions
1	Power button/ Menu items confirmation	a).Press and hold this button for 3 seconds to turn on or turn off the RC。 b).On the menu interface,you can press this button to confirm the menu items.
2/3	Menu button ▲/ Menu button ▼	Enter the menu,press this button to move the cursor upwards/downwards to select the menu items.
4	LCD light button	Press this button to turn on or turn off the light of LCD,hold this button to adjust the intensity of the LCD light when the light is on.
5	Warning tone button	Press this button to turn on or turn off the warning sound.There is warning tone for the low battery power,bait hopper release,hook release,reaching to GPS destination.
6	Operation interface switching button	press this button to switch between fish finder interface and GPS interface.
7	AUTO sailing button	Press this button to switch manual sailing and automatic sailing.When the boat is sailing,you can use the joystick to adjust the boat direction.
8	Boat light button	Press this button to remote control the boat light.
9	Hook release button	Press this button to release the hooks. If the hook icon on the RC screen is disappeared and the warning tone sounds,it means the hook is released.
10	Bait hopper button	Press this button to open the bait hopper.If the bait hopper icon on the RC screen turns from black to white and the warning tone sounds,it means the bait hopper is opened.
11	“SET” Button	On GPS interface,press this button to set or cancel the GPS destination points.

12	“ESC” button	On GPS interface,press this button to exit from the GPS interface.
13/14	Cursor moving button(-/+)	Press this button to move the cursor to the left or right to select the GPS points.
15	GPS navigation sailing button	Press this button to make the boat sail under GPS navigation.If the boat is sailing in GPS mode,you can press this button again to exit from GPS sailing.

B) The remote control display name and function description:

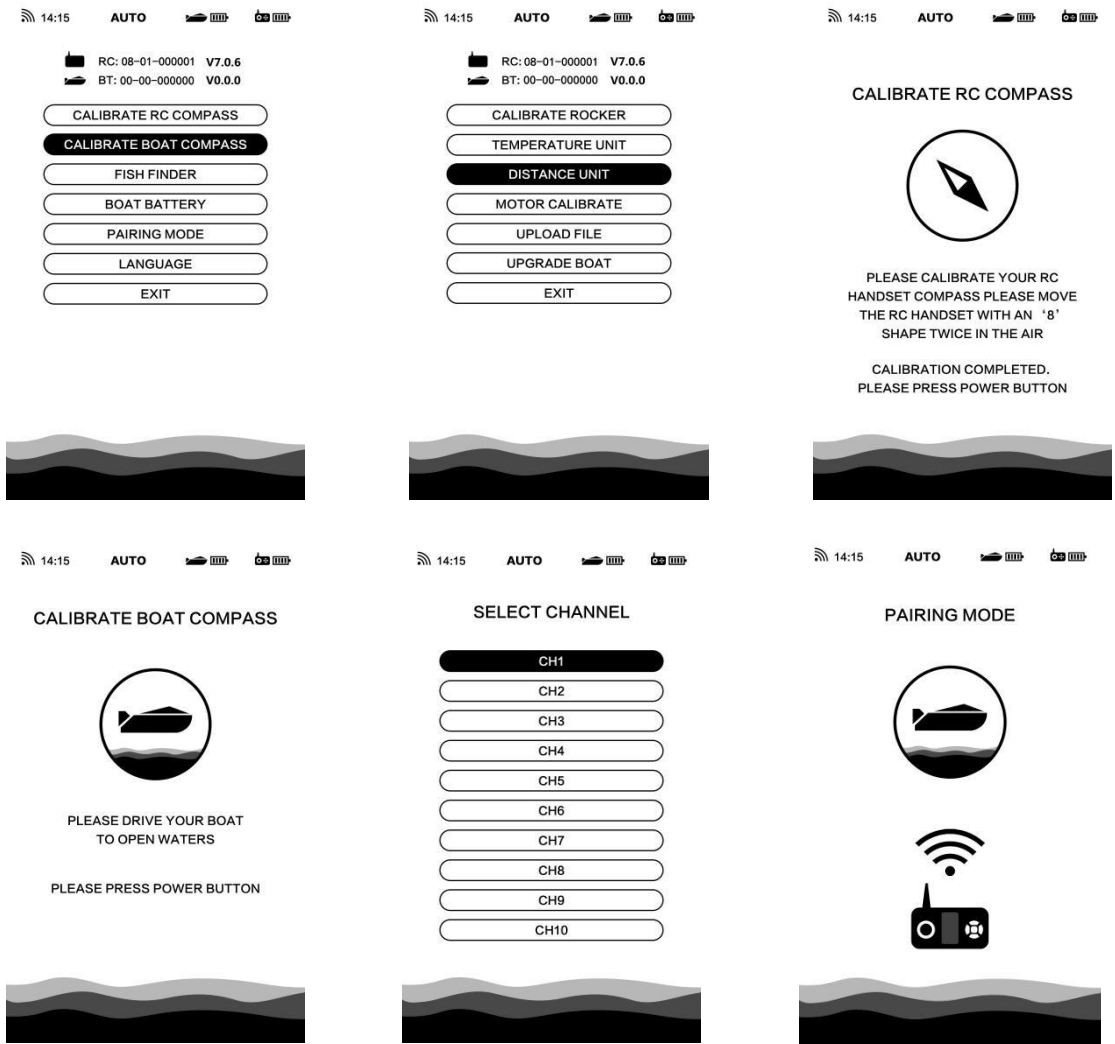


Number	Icon name	Function description
1	Signal	Display the signal strength of the boat and the remote control

2	Operation mode	Display the boat's manual, automatic, GPS driving status
3	Battery power of the remote control	Shows the boat's power, when the power is low, the remote control will sound an alarm
4	Boat battery power	Display the battery level of the remote control, when the battery is low, the remote control will sound an alarm
5	Navigation location selection	H represents the starting point, the other 30 points you can choose as the target point
6	The latitude and longitude of the navigation point	Display the latitude and longitude of the navigation point
7	Boat direction indication	Show the direction of the boat in motion
8	Boat front and rear lights	Display the front and rear lights of the boat. The lights will flash and beep when open the bait hopper or release the hook.
9	Bait hopper opening indication	When the icon changes from blue to white and a beep sounds, it means that the bait hopper has been opened.
10	Hook release indication	When the hook icon turns from blue to white and a beep sounds, it means the hook is released.
11	Sailing distance	Show the actual sailing distance of the boat
12	Boat speed	Show the sailing speed of the boat
13	Number of satellites	The number of satellites should generally be more than 5
14	Navigation accuracy	The smaller the value, the more accurate the navigation. The recommended accuracy is 2.5m or less

C) Menu items and operations:

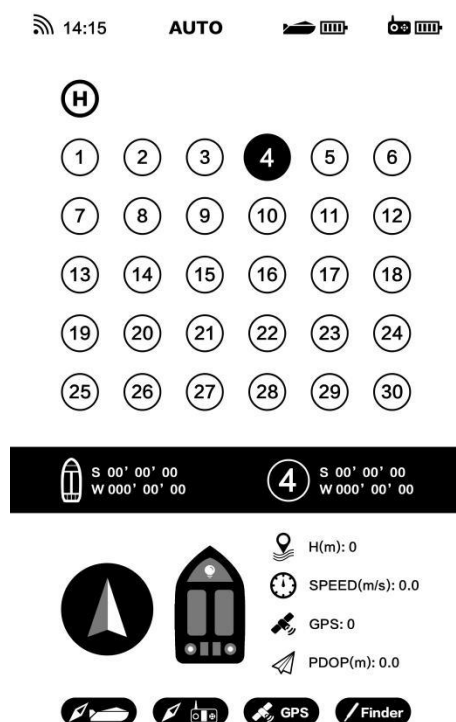
Click the menu button (▲/▼) to enter the menu interface, and set the menu with the power button. After the operation is completed, click the power button to exit the menu interface.



Calibration	Menu icon setting instructions
CALIBRATE BOAT COMPASS	Choose this menu and press the power button to enter into the boat compass calibration interface.Press the power button again,the boat will start calibration by turning around automatically in the water.When the calibration is finished,the RC screen will exit from the calibration interface automatically.

CALIBRATE RC COMPASS	Choose this menu and press the power button to enter into the RC compass calibration interface.Press the power button again,turn around the Remote control in 360 degrees and move the remote control up and down to calibrate the RC compass.When the calibration is finished,the RC screen will exit from the calibration interface automatically.
PARING MODE	Turn on the boat,choose this menu and press the power button to enter into the channel selecting menu.Press the “▲” or “▼” button to choose the channel,then press the power button to confirm the selection,the boat will start paring with the RC(Make sure that the boat is switched on when paring).During paring,the boat light will be flickering.When paring is finished(success or fail),the interface will stay for 5 seconds and then jump to the main interface.

3. GPS Satellite Navigation



A). GPS Functions:

* There are icons to show the direction,position and distance of the destination points.

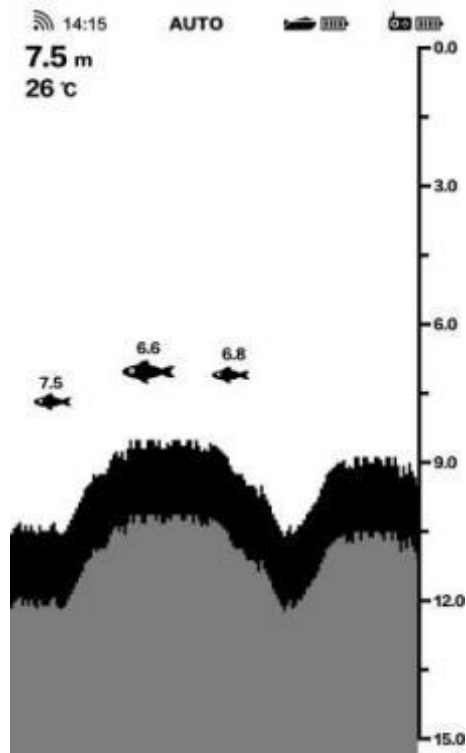
* You can set and store 31 GPS locations (“HOME”is the departure point and 1-30 are the destination points).

- * Show the latitude and longitude of the boat in motion;
- * The boat can sail automatically using the GPS system between the preset locations.
- * The boat will return automatically to the departure point in cases of remote control battery outage or communication outage(You must set “HOME” as the departure point at first.It is recommended that “HOME” be set to the nearest location to the operator.).
- * Calculate and show the straight-line distance between the departure point and the destination of the boat.
- * Detect the speed and travel time of the boat;
- * Detect the accuracy of GPS navigation : the smaller the value, the more accurate the navigation. The recommended accuracy is 2.5m or less.
- * The front and back lamp of the boat will flash and the remote control will make audible tones when the boat reaches the destination.

B).GPS operation instructions:

- a).Press the“Operation interface switching”button to enter into the GPS interface,there are 31 numbers to select for the GPS locations.(“HOME” stands for the departure point,and the number “1-31” stands for the destination points.)
- b).Before operation,please wait for 3 minutes until the satellites number reach to 5.
- c).Press the “-/+" button to move the cursor,then press the “SET” button to set the selected number as the GPS locations. If you want to remove the GPS location from the selected number,you can press and hold the button “SET” for 3 seconds.
- d).Press the button “GO” to make the boat sail under GPS navigation.If the boat is sailing in GPS mode,you can press this button again to exit from GPS sailing.
- e).Press the button “ESC”or the“Operation interface switching”button to exit from the GPS interface.

4.Fish Finder



A) Main Functions:

topography, water temperature, water depth and fish situation on a real-time basis.

- * The detection of water depth is of 4 levels: 2-5 meters, 5-15 meters, 15-20 meters, and 20-30 meters.

- * There icons of fish size can be displayed: big, medium, and small.

- * The sensitivity of fish detection is of three level: C1/C2/C3 from low to high.

- * Indicate the actual contour of the riverbed.

- * Warning tones of finding fish:when there is fish in the water,the remote control will make warning tones.

B) Check the Working Status of the Fish Finder:

- * The fish finder is working well if the water temperature indicates the current temperature

of the environment.

* Put the probe(at the bottom of the boat) 60 centimeters away from the ground, if the remote control indicates the distance of 3 meters and there is a bold line, it means that the fish finder is working well.

Notes:

* The fish finder can only work in the water, and it will make mistakes if it's used on the land. It will recover if it's put back into the water.

* The fish finder only works in the water deeper than 1 meters.

5.Charger

A) Boat battery charger:The charger has LED charging indicators. A red light indicates battery is being charged, after the charging is completed, the red light will turn green to indicate battery is fully charged.

B) Charging the remote control:

The black and white screen is equipped with a remote control charger.

6.Safety Precautions and Notices

* The antenna is a conductor for electromagnetic waves and lightning, and it will very easily attract the fresh flashing and thunder, so please do not use the bait boat during stormy conditions.

* It's dangerous to use the remote-control handset where explosives are used. Please avoid using the boat in these locations.

* As the electronic compass is easily affected by external environment, please avoid using it under high-voltage cables as well as in any areas surround by a strong magnetic field or

in areas of mining.

* The angle between the antenna of the remote control handset and the ground should be greater than 45 degrees. Please ensure the antenna of the remote control handset is kept at a high position, to ensure the maximal signal between the boat and the remote control handset.

* DO NOT try to dismantle the boat or the remote-control handset by yourself for any reason. For any repairs required, please contact your supplier to arrange for an authorized repair. The Company will not be responsible for the loss caused by unauthorized dismantles.

* Please ensure the solenoid switch of the bait hopper is clean, and please clear the sands, muds or any other dirt attached to the solenoid switch and the metal plate so as to keep the switch functional.

7. Product Standard Configuration and Packing List

NO	Name	Specification	Quantity
1	Boat	RYH-001, RYH-003,RYH-004	1
2	Black & White screen Remote control	RYH-YKQ-A	1
3	Charger for Boat Battery		1
4	USB cable for Charging the RC Battery	You can connect the USB cable to the mobile phone charger and plug it into the remote control to charge the remote control.	1
5	Charger Conversion Plug		1
6	Boat battery	Lead-acid battery or Lithium battery	2