
Carp Design V80 EVO+ GPS Bait Boat

Product Operation Instruction

(Item number: 213675/213676/213677/213678)



User Instruction:

Dear users:

Thank you for your purchase of our products. Before you use this product, please make sure to read this instruction carefully and operate and maintain the bait boat according to the instruction. If you have any question on the instruction, please contact our after-sale service.

I. Factory and product introduction

1. Product introduction

Parameters of V80 Bait Boat:

Basic parameters	Boat parameters	Product model: V80 Dimension: 80cm (L) * 40cm (W) * 28cm (D) Net weight: 8kg Maximal loading: 5kg Bait hopper dimension: 28cm (L) * 15cm (W) * 12cm (D) Boat material: high-quality ABS engineering plastics
	Wireless performance	2.4GHz anti-interference remote controller 500m remote control distance
	Bait casting and hook dropping	4 independent bait hoppers (opened separately under control) 2 independent hook device Optional bait thrower Wearing-free electromagnet bait casting and hook dropping system.
	Product performance	Two sets of lithium batteries (12V31.2AH) with 5-hour duration, High-performance high-torque ultra-silence motor Waterproof design of the whole boat Double boat body design and resistance to Class 5-6 storm Double motor driving, best operation and control performance and ability to turn around in situ Stepless speed change and maximum operation rate of 90m/min Optional course auto-adjust function Optional GPS auto-drive, and function of dropping bait automatically Protective system resistant to water weeds and fish line winding Reserved fish finder and GPS navigation installation port Reserved bait thrower, double hopper installation port Charging voltage of AC220 for boat charger

II. Packing list

1. Godio intelligent remote control bait boat 1 set
2. Anti-interference remote controller (include antenna) 1 set
3. Lithium battery pack for boat 1 pair
4. Boat antenna 1 piece
5. Charger for boat: 1 piece
6. Boat bag: 1 piece
7. Hanging rope of remote controller: 1 piece
8. Diverter wire of charger: 1 set
9. Small accessory bag: 1 piece
10. Product instruction: 1 piece
11. Foam pack: 1 set
12. Paper box for boat: 1 piece
13. Optional accessories .

III. Precautions for use

- 1. After you make sure to know and grasp operation keys of this bait boat, you can use it on water. Every time before your travelling, you shall check functions of the boat and carry all accessories to ensure normal operation.**
- 2. To ensure that the boat can work normally, make sure to clean it after each use. Every time before the boat is used, make sure that the battery compartment is covered and it is kept waterproof. After using, open the battery cover to check if the battery compartment has any water in it, ventilate the boat in a dry place, and keep the inside of the boat body dry.**
- 3. Do not make the motor idle. If the motor shaft gets away from the water level,**

it cannot be cooled by water. The heat due to friction with the water seal will make it quickly age and degrade the waterproof performance.

4. The effective distance of the remote control signal is 500 meters. In use, please try to keep the boat in line of sight. When the remote control signal is lost or the remote control is turned off, the boat will automatically return to the starting point, while the front and rear four lights keep flashing.
5. The antenna of the boat and remote control should point to the sky, so that the signal transmission and reception effect is the best.
6. When the power of the boat remains 30%, the alarm light starts to flicker, and it have about 15 minutes of sailing. When the power is reduced to 20%, the alarm red light starts to flicker, and the boat starts automatic return at any time. Please stop using the boat immediately and charge the batteries.
7. After a new boat is received, please first charge the batteries, and then use the boat. Each time after the boat batteries is used, or if they are not used for a long time, they shall be charged 90% for storage. If they are not used for a long time, the batteries shall be taken out and be placed in a dry and ventilated place. And the batteries shall be charged again every 3 months. Do not discharge the batteries excessively. Otherwise, it will damage the batteries and they cannot be used normally. If the batteries fail due to incorrect battery maintenance of the customers, it is beyond the warranty scope.
8. When use the boat, if there is a problem of deviation during the sailing, please put the boat stationary on the land for more than 20 seconds under the startup state before the operation in water (calibration of course stabilizer). If the problem still persists, please follow the prompts in the remote control settings to do the central calibration operation of the joystick.
9. Do not use this boat in the water areas with plentiful waterweeds. If the boat propeller is wound by the fish wires, please stop using the boat immediately. After the fish wires are removed, the boat can be used again. When the fish wires are dragged, do not move back for a long time as much as possible to

prevent fish wires from winding in the propeller.

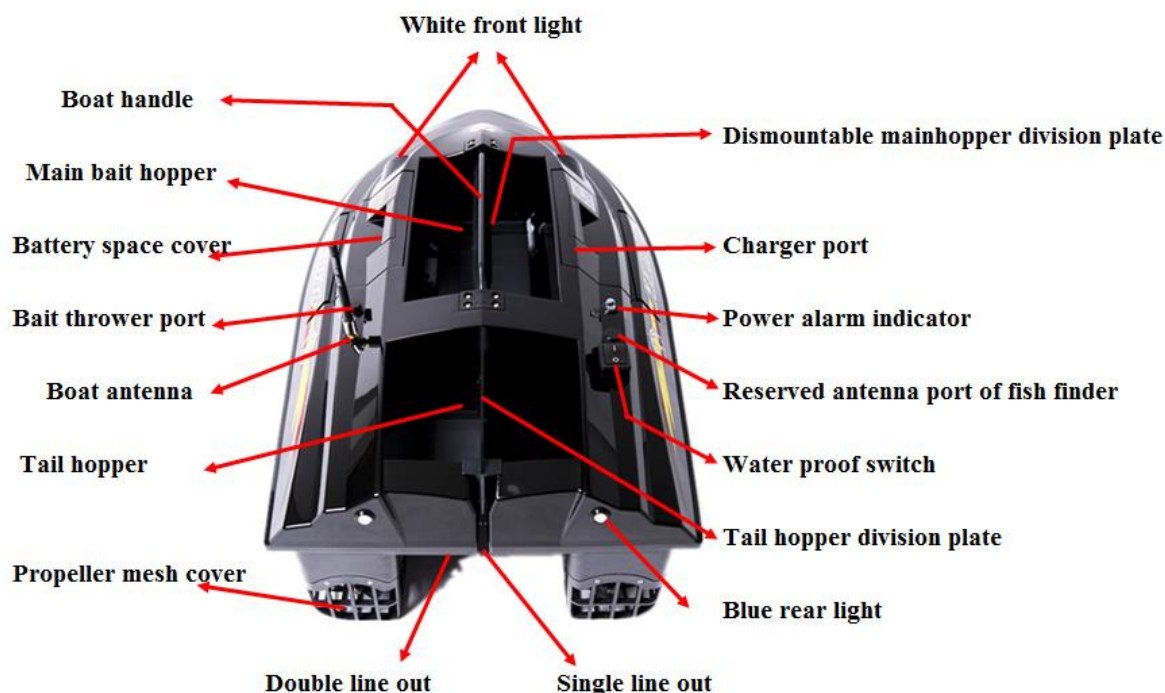
- 10. When the boat is turned on for the first time in unfamiliar waters, it will take about 3 minutes for the satellite signal and course stabilizer initialization. During this time, please keep the boat on land with no any operation. When the number of satellites reaches 10, the automatic driving function can be activated, and when the number of satellites reaches more than 13 and it is an empty area without obstacles, the positioning accuracy can reach about 1 meter. The maximum positioning error is 2-3 meters which is within the normal range. The second boot of the boat is not apply to this requirement.**
- 11. After arriving at the fishing ground, please set the start point firstly to ensure that the boat automatically returns to the start point in case of emergency. It is suggested to set the start point to the water 2-3 meters away from the shore. Start the autopilot function at the starting point, and the bow should point as far as possible toward the broad water. To prevent the boat from hitting the shore during the automatic steering process**
- 12. Center the right joystick before using the GPS autopilot function. Always have the function of manual control priority in the process of automatic driving. During this period, when you operate the right joystick, the autopilot program is terminated and the operation mode is changed to manual.**
- 13. In the process of fish detection, after the sonar gain is increased to X4, it is suggested to turn off the automatic direction maintenance function of the course stabilizer, because the automatic speed regulation of the motors may interfere the echo of the fish finder, resulting in more clutter.**
- 14. Do not use this boat in bad weather conditions, such as lightning, heavy rain, wind and waves.**
- 15. It is prohibited to use the boat in waters prohibited by national or local laws and regulations, and children are forbidden to touch and use the boat**
- 16. This product has been granted with the state utility model and appearance patent, and its brand trademark has been registered. Do not infringe our**

trademark. Once any infringement is discovered, we will investigate related legal responsibilities.

IV. Operation guidance

1. Boat installation and operation instruction

The boat functions are described as follows:



- 1-1 First open the left and right battery compartment covers with the screwdriver, take two batteries from the foam box, place them which labels have to face up into the left and right battery compartment of the boat respectively, connect the battery power lines at two ends respectively. Cover the left and right compartment hatches.
- 1-2 Take out the boat antenna, fasten it clockwise, and fix it onto the boat antenna seat.
- 1-3 If nesting is required on the left and right side of the middle compartment respectively, insert the division plate of the middle compartment into the front and rear slot of the compartment and fix it.
- 1-4** After turning on the boat switch, the front and rear lamps of the boat will flicker for three times. Close the left and right bottom compartment plate

of the middle compartment, and the bottom plate of the tail compartment, then put the bait in. When the bottom plates of the compartments are opened separately by the remote controller, the warning indicator will flicker.

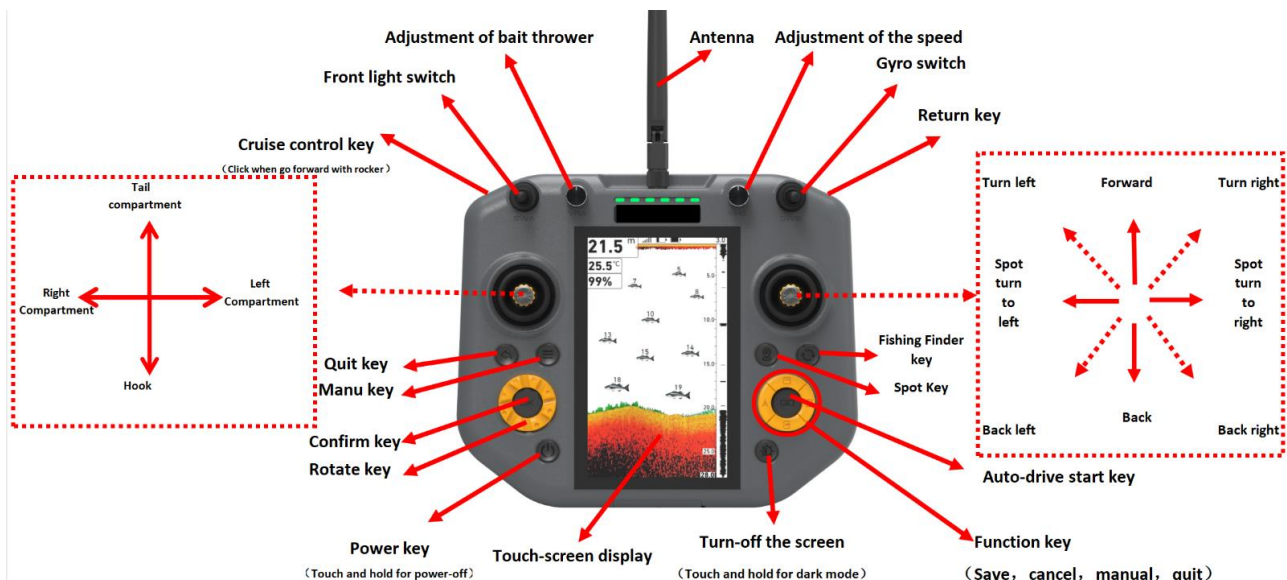
1-5 Take out the remote control, place the antenna of the remote control, hold the key of the remote control, the remote control power light will turn on. Then test the remote control right joystick control

1-6 If you need to carry the bait and the hook set, please put the fishing line through the reserved single outlet or double outlet.

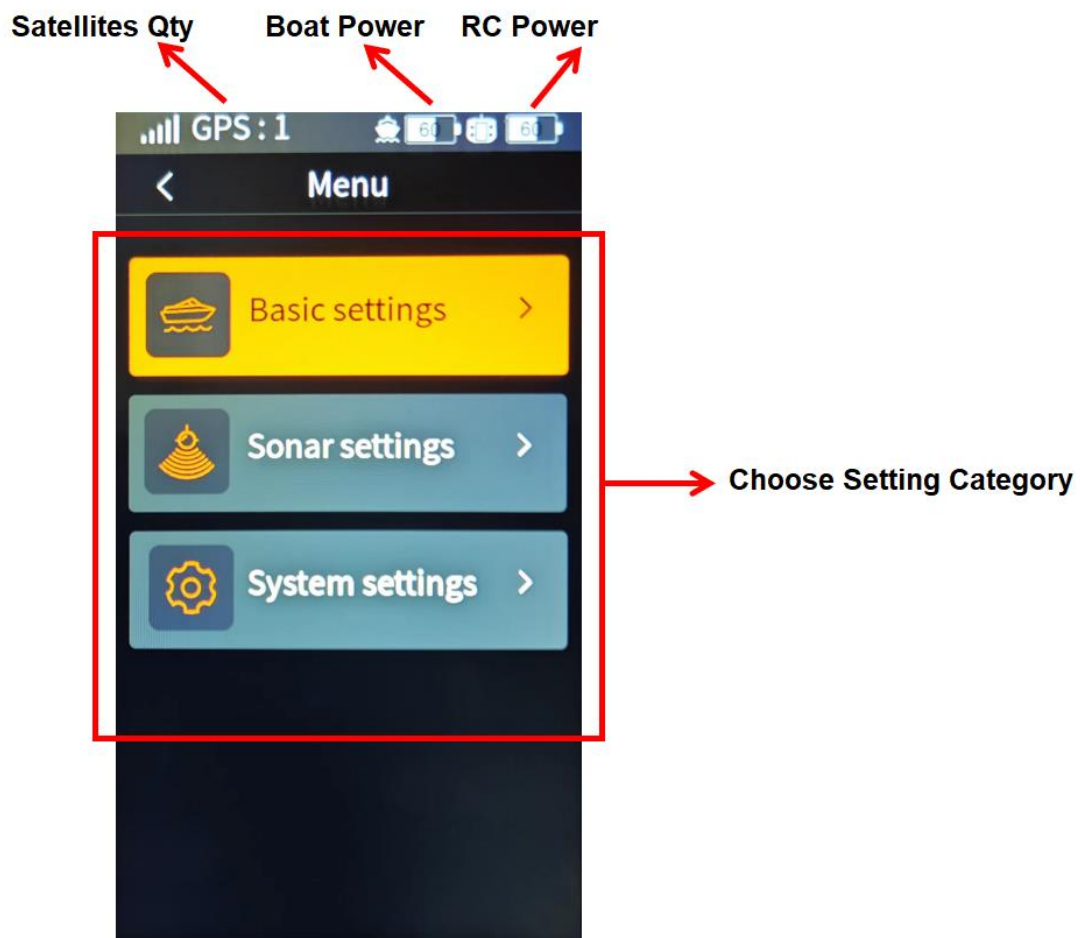
1-7 After use, please power off the boat firstly, then the remote controller.

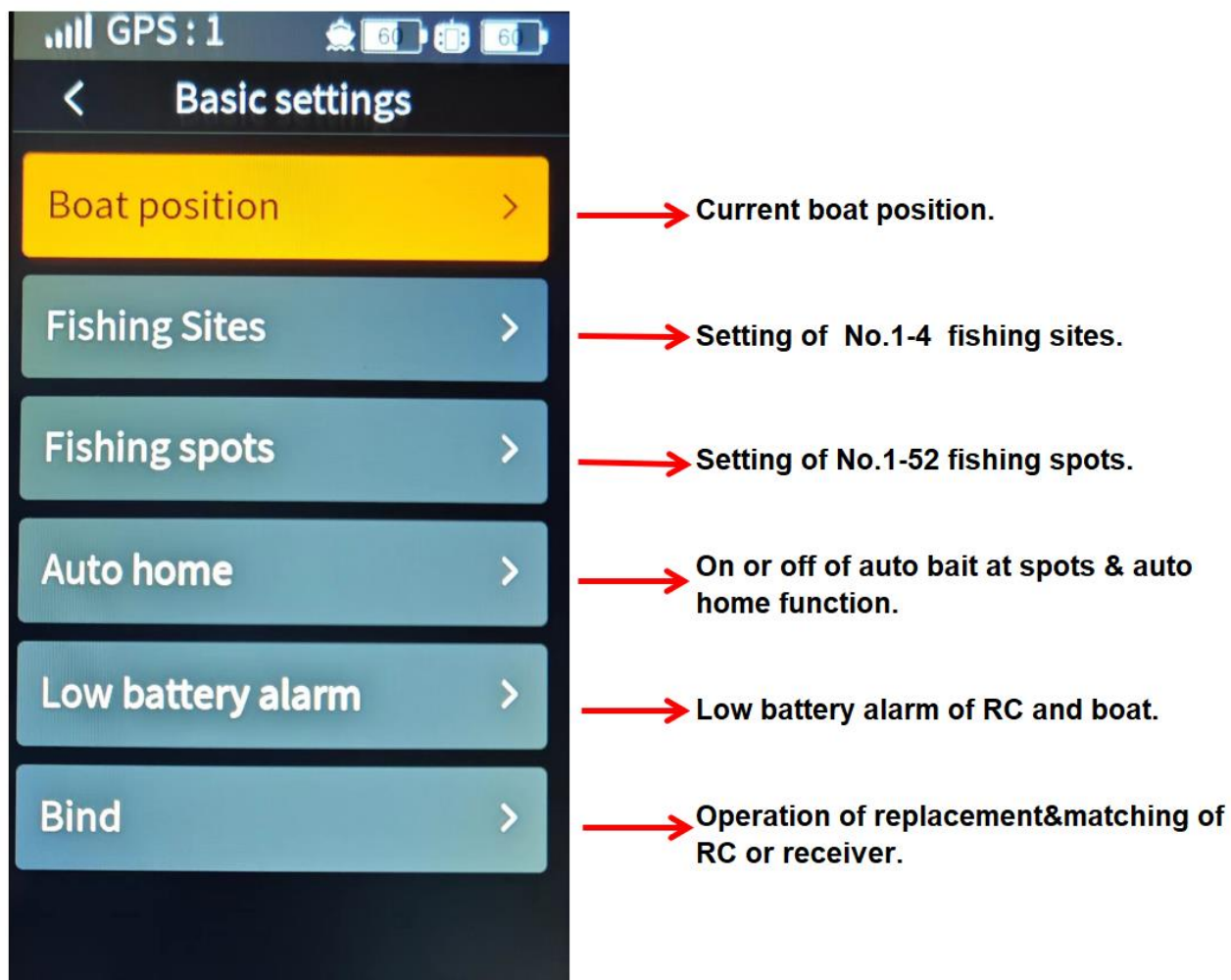
2. Operation instruction of remote controller

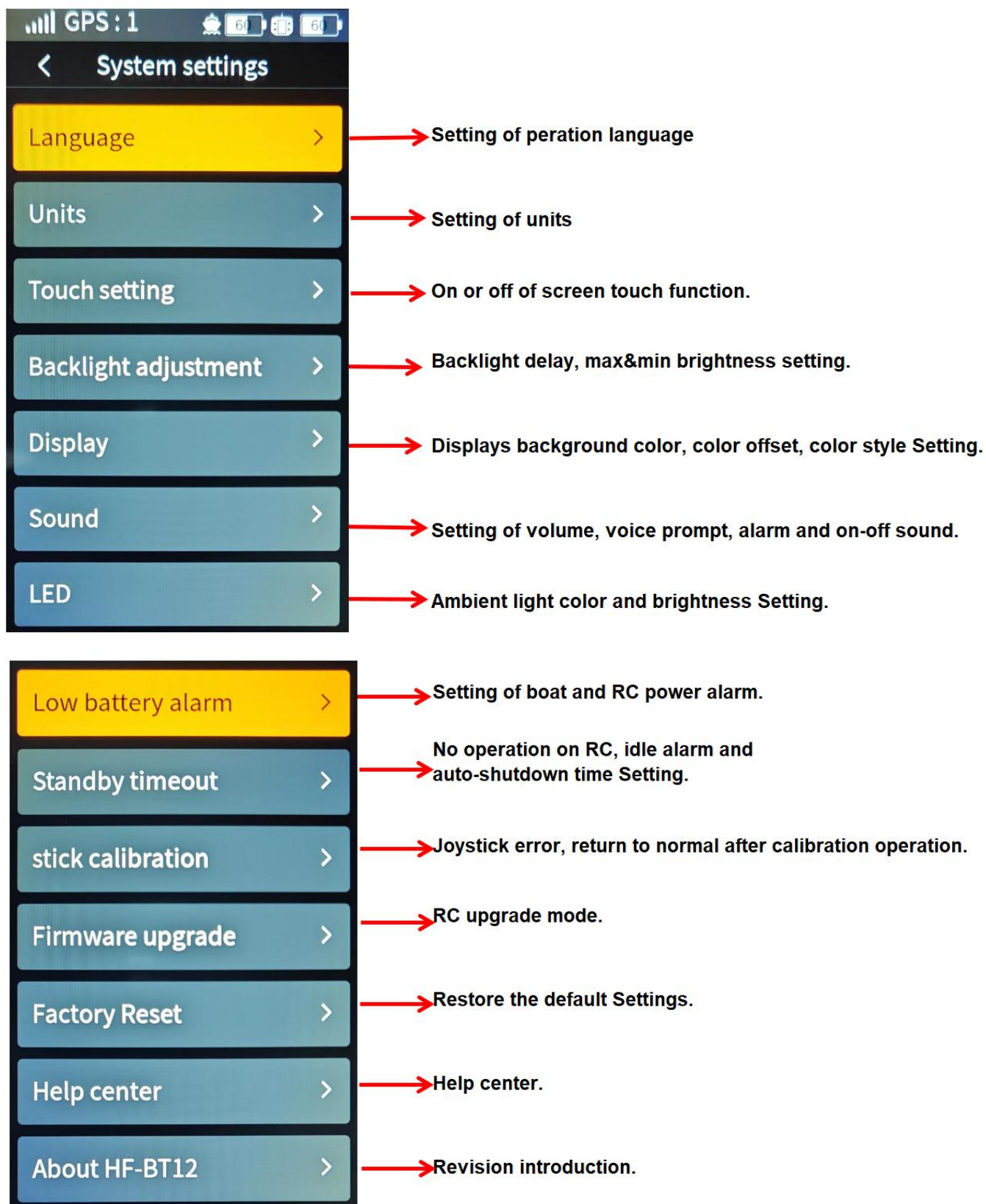
The standard remote controller is operated as follows:

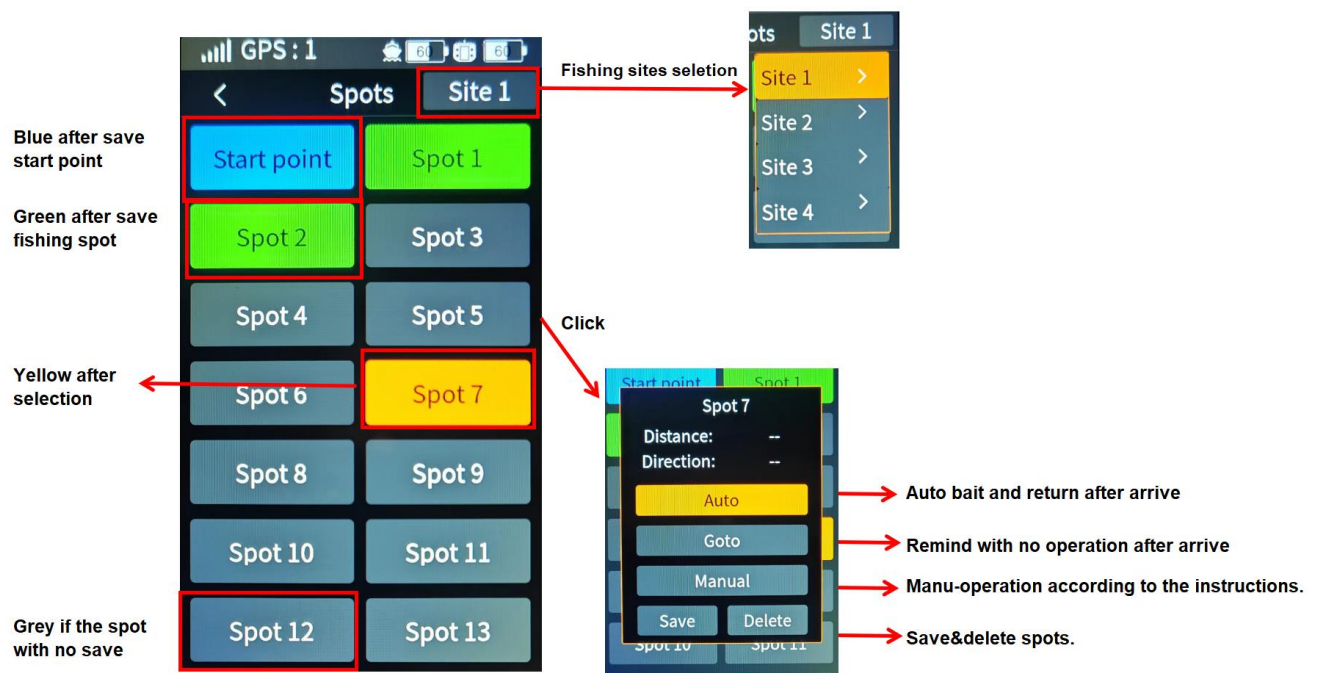


Remote control menu and operation introduction

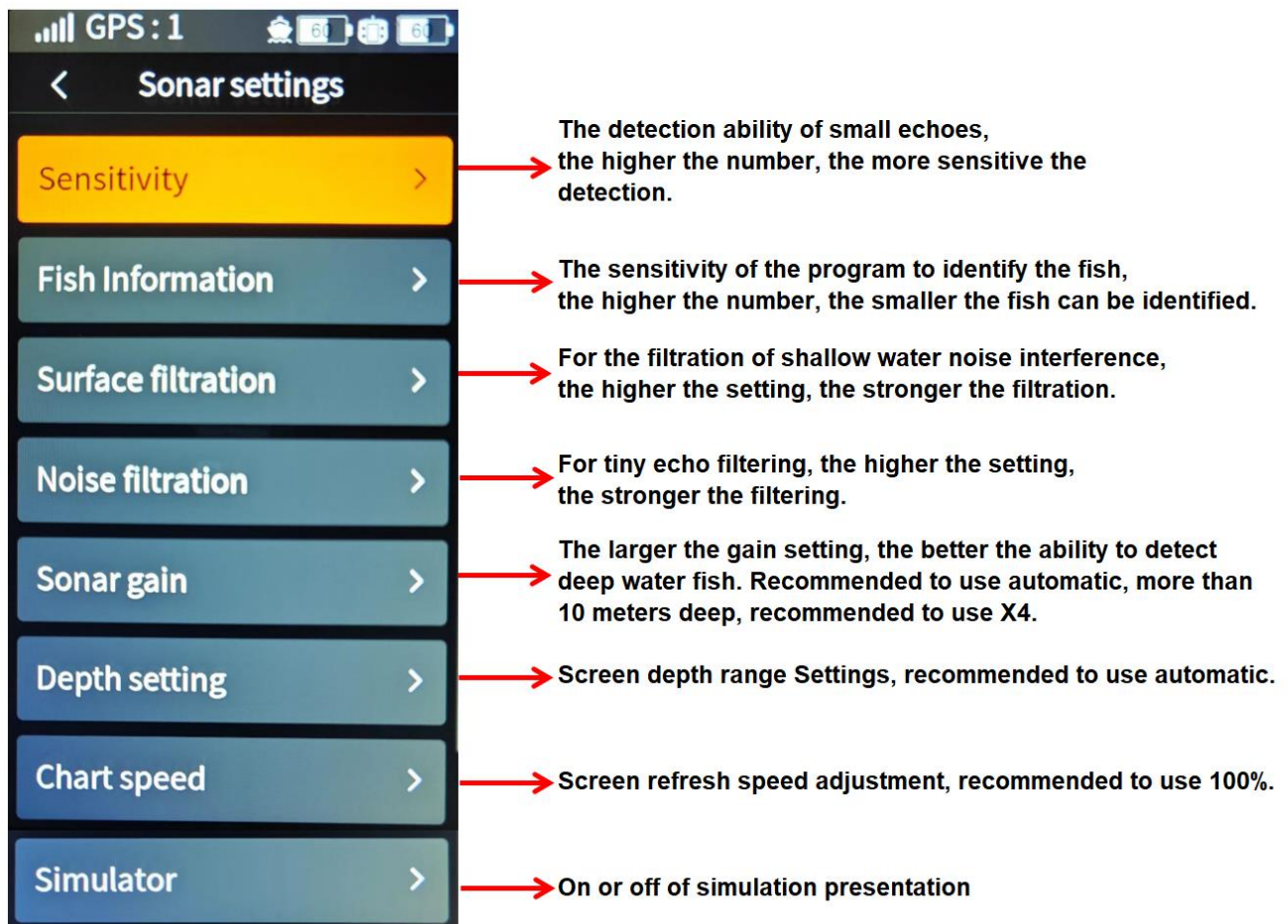


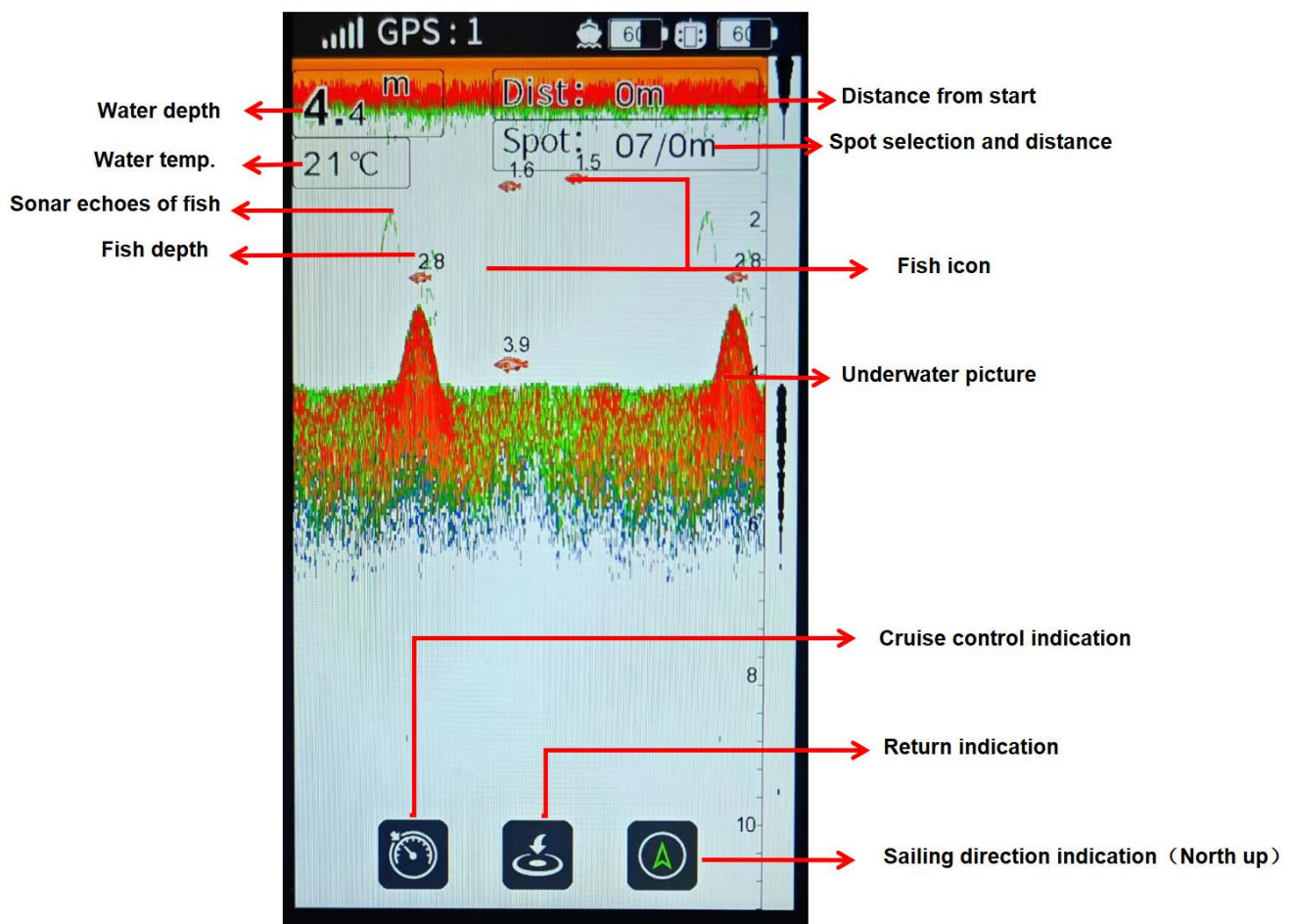






3-3 Fish finder menu and interface introduction





V. Charge the battery

Please use the factory-supplied 12.6V/5A charger to charge the boat battery pack. Please keep the boat power off while charging. The charger indicator light is red when charging, and turns green when fully charged

For charging method 1, please directly plug the charger output into the charging port of the hull (inside the hull, DC charging port under the battery cover) to charge the two battery packs simultaneously; Charging method 2, please take out the two battery packs in the battery compartment of the hull, connect the factory equipped shunt wire to the charger, connect two battery packs at each end of the shunt wire, and charge the two battery packs at the same time.

The time it takes to charge two battery packs at the same time with this charger is

approximately 7-8 hours, when only one battery pack is charged, the time is halved.

VI. Warranty notes

1. The valid warranty period of our whole nesting boat is 1 year and the valid warranty period of the battery pack is 6 months. The valid warranty period is counted since an effective sales voucher is provided.
2. Make sure to keep your sales voucher. When this product needs to be repaired, please contact our after-sale.
3. If the product is repaired due to product quality during the warranty period, we will provide the reference accessories.
4. If the warranty period of the product expires, we will provide lifelong paid repair for customers.
5. We will provide free after-sale service during the warranty period. The following cases are beyond the scope of free warranty.
 - 5-1. The specified valid warranty period is expired.
 - 5-2. No sales voucher and warranty voucher is available except that this product is proved to be within the valid warranty period.
 - 5-3. This product is damaged because it is not operated and maintained according to the operation instruction or is incorrectly operated.
 - 5-4. Any man-made damage (including damage due to boat falling and hard collision), or any damage due to disassembly and refitting of the repairers not assigned by us.
 - 5-5. Damages due to fire, flood, lightning, earthquake or other force majeure or accidents.

VII. Common questions and troubleshooting

1. The boat does not work after the power is turned on.

Reasons: (1) The battery power line is not connected or the battery power is too low; (2) Check the main control board Trouble (3) Switch problems.

Shooting method: Check power line connection of the left and right batteries, charge the batteries, and contact with after-sale personnel for replacement of the main control board or switch.

2. The boat will deviate to one side in sailing.

Reasons: (1) The boat is affected by the water flow or stormy waves; (2) The course stabilizer is not stable; (3) Deflection caused by the pull of the fishing line .(4) The direction protection function is off.

Trouble shooting method: Put the boat on the land stationarily for more than 20 seconds while the power on, turn on the directional protection function. Please calibrate the middle of the right joystick of the GPS RC (follow the prompts in remote control setting to calibrate)

3. The boat stops in the water due to an unknown reason, the lamp keeps flickering, and the remote controller does not work.

Reasons: (1) The remote control distance is exceeded; (2) The power of the remote controller is not turned on or the power is low; (3) The antenna is not installed in place or the antenna is damaged.

Trouble shooting method: Check the power of the remote controller, replace the batteries, hold the antenna of the remote controller high to the sky, move the remote controller to the boat, and check and replace the antenna.

4. The tail hopper door cannot be opened.

Reasons: (1) The electromagnet line falls off; (2) The electromagnet is damaged; (3) The main control board is damaged;

Trouble shooting method: Check the line, replace the electromagnet and main

control board.

5. The boat is out of control in the water, one of the motor stop. But the lamps and other functions work normally.

Reasons: (1) The motor is wound with the fish lines or water weeds; (2) the motor plug is loose or off ; (3) Motor overload protection

Trouble shooting method: Stop operation and take the boat back. Check the plug of the motors and if the propeller is clean.

6. The water enters the boat compartment.

Reasons: (1) The battery port is not covered well or the adhesive tape is damaged and falls off; (2) The water seal of the tail shaft is damaged; (3) The position of the transducer leak.

Trouble shooting method: Remove the water, ventilate the boat for dryness, check the boat and air tightness of the battery port, check air tightness of the tail shaft, and check the sealing of the transducer.